

---

# **NEW HORIZON**

**NEW HORIZON** Building Materials Trading (L.L.C.)

---



**Fixing System Suppliers**

**P. O. Box : 94421, Dubai, United Arab Emirates.  
Warehouse # C 46, Plot # 242-397,  
Bin Sougat Warehouses, Al Qusais Industrial Area – 1  
Direct Line : (+9714 )258-9689 Fax : (+9714 )258-9688  
Email : [nhbm@eim.ae](mailto:nhbm@eim.ae) Web Site : [www.nhbmt.com](http://www.nhbmt.com)**

*"Dependability..... Delivered"*

## About Us

NHBM is a family run trading company for the past 12 years now. Was established in 2007 and has been at the forefront of supplying a wide range of building materials, hardware items, plumbing items, and a comprehensive range of electrical products for all kinds of applications and uses.

We pride ourselves on our customer service. At NHBM we have a knowledgeable sales staff that's schooled in a number of areas. Whatever the job, we have people who can help. Some of our employees are ex-purchasers, others specialize in certain types of jobs, some are skilled in reading building plans. Our extensive knowledge in the building industry has given us a tremendous popularity and made us one of the best quality suppliers in UAE.

We keep a large variety of products in stock. If you see it in our brochure, we'll get it for you. We stock high-quality products at competitive prices for all your building needs. The company maintains a huge inventory of all items in order to help its customers meet their requirements at once. The easy availability of a wide range of items has made NHBM a preferred choice with customers from various parts of the world. The company has been able to win the loyalty of its customers by providing quality products at rock bottom prices. By importing its product range directly from reputed manufacturers around the globe. NHBM is able to offer extremely competitive prices and on all its products.

Our principals are mostly based in Europe, USA and Canada. **NHBM is long Island's exclusive distributor of** Lindapter, Locatelli Cast- in Channels & Accessories, KWT Penstocks, Cooper B-Line, Fischer Fixing Systems, Rockwool Insulation & Schafer + Peters GmbH Fasteners.

We are also one of the leading manufacturers of Steel Buildings (Hot Rolled), Composite Panels; Profiled sheets Purlins (Z&C) and other components of Steel Buildings with state of the art manufacturing Equipment's. NHBM has it all. We want you to make us your one-stop destination for all of your project's needs both big and small.

### **SOME AREAS OF APPLICATION:**

- Oil and Gas.
- Airports
- Railway
- Stadiums
- Theatre
- Tender Biding etc...

### **APPROVALS from our Principals:**

International approvals from, CE, ICC-ES, DIBT, Lloyds register, TUV Nord, FM, VDS etc.

In addition to the benefit of high quality proven products we provides support with a full range of marketing, technical and sales support & also offer a free design service.

## Our Values

**WE ARE COMPETITIVE.**

**GOOD QUALITY IS CRUCIAL**

**THE CUSTOMER IS OUR PRIORITY**

**WE GIVE IMPORTANCE TO  
THE CHANGE**

**WE GIVE IMPORTANCE  
TO THE TEAM WORK**

**WE ARE SOLUTION DRIVEN**

**WE BELIEVE FAIR TRADE**

**WE GIVE IMPORTANCE TO  
THE SOCIAL AND CULTURAL VALUES**



# Our Management Structure

“By keeping our profit margins thin, we have been able to build a wide customer base,” says Director Nasir Mahmood of NHBM who is known for his extensive experience in the field and his sharp business acumen.



**New Horizon Building Material Trading LLC**  
Founder / Owner : Mr. Nasir Mahmood

CEO : Mrs. Fouzia Rafat Mohammed Yusuf Shaikh

Management Team

Finance / Admin / Marketing /  
Logistics / Sales / Warehouse



## Countries we have Customers from



### Middle East

Oman

KSA

Qatar

Bahrain

Kuwait

### Asia

India

Pakistan

Sri Lanka

### Africa

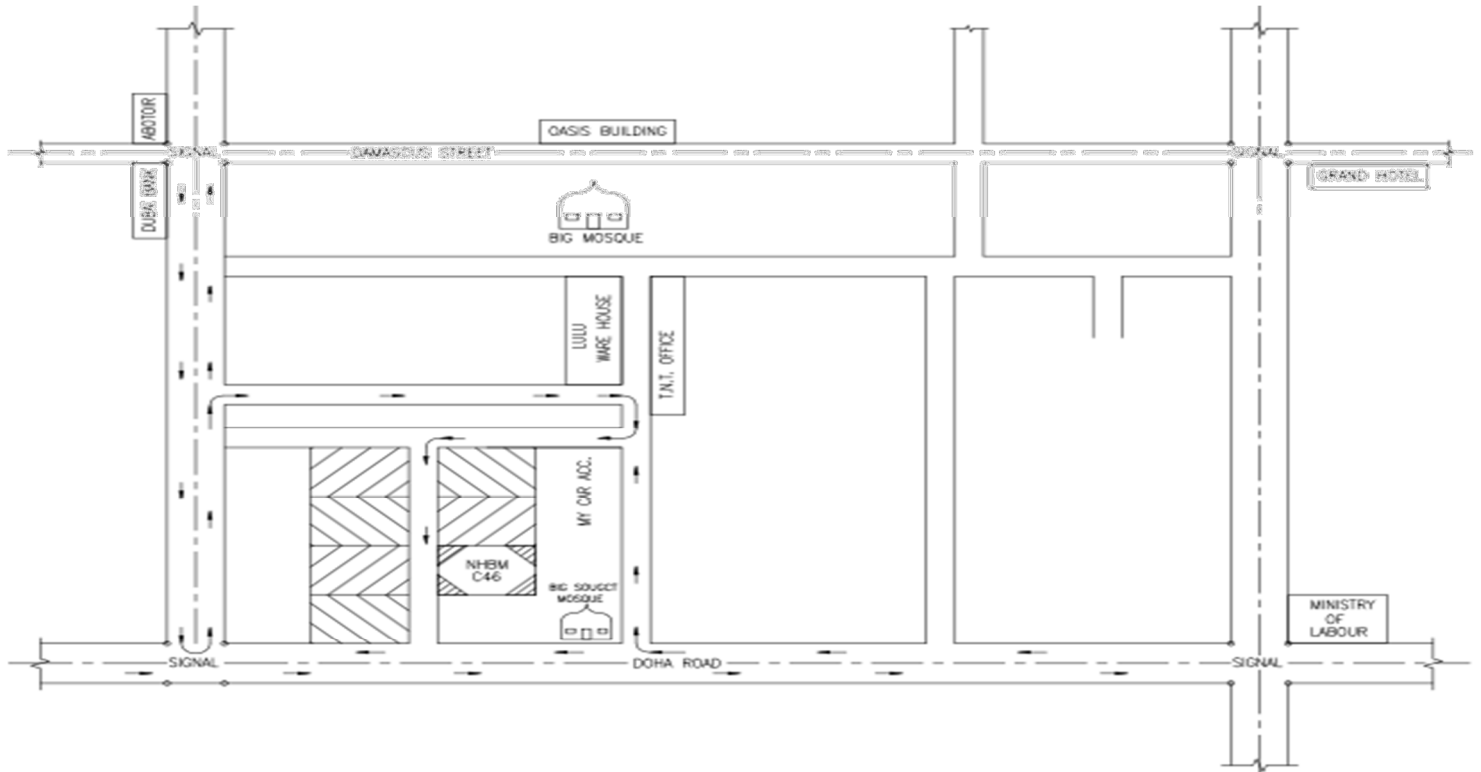
Ghana

Nigeria

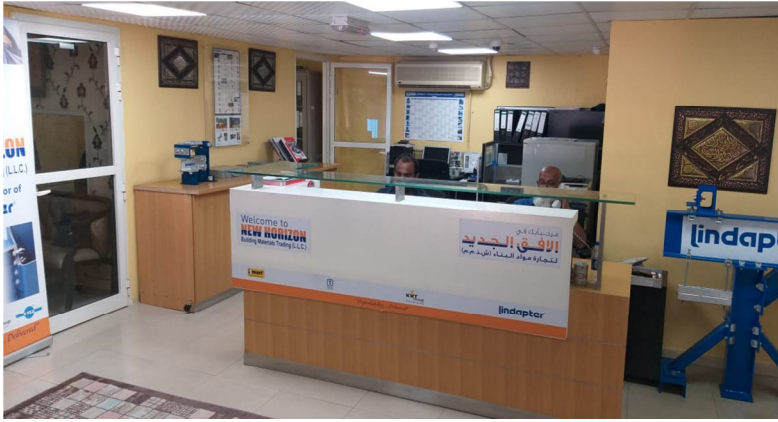
### Russia

Azerbaijan

## Our Office & Warehouse Location



# Our Office & Warehouse



## Official Distributers for



Water/Wastewater Valves

# Some of Our Projects & Clients

## Expo 2020 project



Material Supplied : Lindapter Brand Hollo Bolts

Client : Empereal Ruby Energy and Innovation



## Palm Atlantes project



Material Supplied : Lindapter Brand Hollo Bolts and S & P Brand Bolt, Nut, Washer

Client : BESIX-LARSEN & TOUBRO JOINT VENTURE



# Dubai Metro



Material Supplied : Fischer Brand Anchor Bolts, Channels, Clamps & Chemicals

Client : Al Futtaim Engineering

ETA M & E

Al Shaffar Engineering



# Dubai Opera



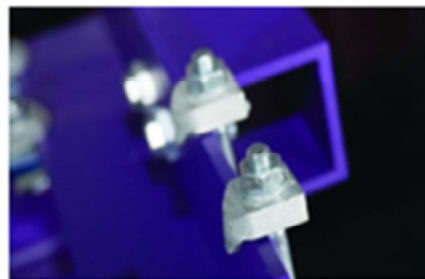
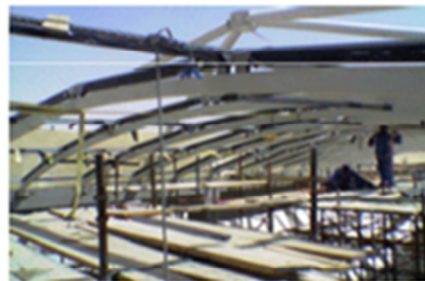
Material Supplied : Lindapter Brand Clamps and S & P Brand Screws

Client : Emaar

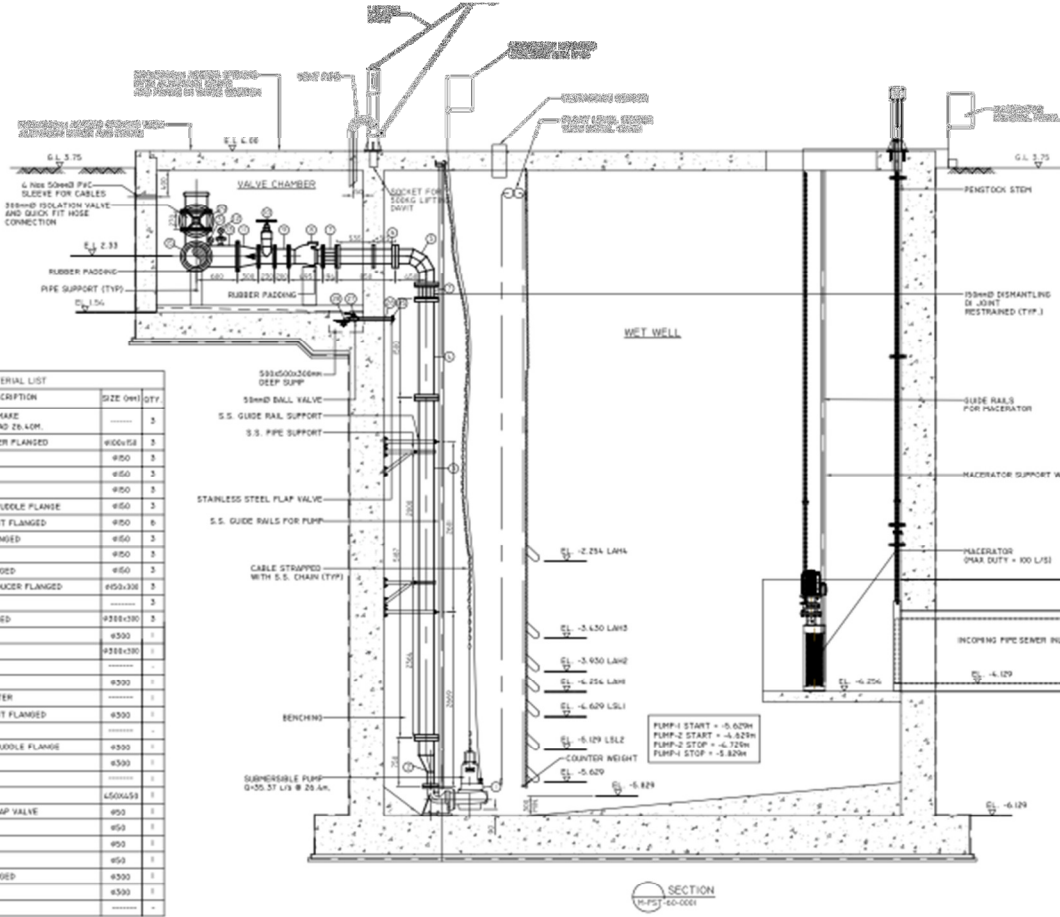




# Some of Our Process



# Drawings of the Projects used our Products



1. ALL DIMENSIONS ARE TO FACE UNLESS OTHERWISE SPECIFIED.
2. ALL DIMENSIONS ARE TO FACE UNLESS OTHERWISE SPECIFIED.
3. ALL DIMENSIONS ARE TO FACE UNLESS OTHERWISE SPECIFIED.
4. ALL DIMENSIONS ARE TO FACE UNLESS OTHERWISE SPECIFIED.
5. ALL DIMENSIONS ARE TO FACE UNLESS OTHERWISE SPECIFIED.
6. ALL EXPOSED EDGES TO HAVE A 25mm x 25mm CHAMFER.
7. ALL GRP PIPES THROUGH WALLS OF UNIT SHALL BE PROTECTED FROM JOINT STRESS FRACTURE IN ACCORDANCE WITH THE SPECIFICATIONS.
8. DETAILS OF MECHANICAL EQUIPMENT PIPE WORK, VALVES, PENSTOCK SUPPORTS, PIPES, COVERS, OPENINGS, REGATES ETC. SHOWN ON THE DRAWINGS ARE FOR GUIDANCE ONLY. THE CONTRACTOR SHALL PREPARE AND SUBMIT SHOP DRAWINGS PRIOR TO CONSTRUCTION AS PER THE APPROVED EQUIPMENT MANUFACTURER REQUIREMENT FOR APPROVAL.
9. ALL GRP PIPES AND FITTINGS SHALL BE OF PN16 RATING MANUFACTURED IN ACCORDANCE WITH BS EN 14685 PART 1 SHALL COMPLY WITH BS 5352 OR ASTM D 1709.
10. ROCKER PIPES TO BE PROVIDED IMMEDIATELY ADJACENT TO ALL STRUCTURE FACES WHERE SUBMERGIBLE PIPES PASS THROUGH.
11. BONDING DETAIL BETWEEN THE PUMPS TO BE CONFIRMED BY THE CONTRACTOR TO THE APPROVAL OF THE ENGINEER FOLLOWING CONSULTATION OF THE PUMPS SUPPLIER. DIRECTION OF THE BONDING TO BE CONFIRMED BY CONTRACTOR AND SHALL BE COORDINATED WITH THE PUMP SUPPLIER.
12. ACCESS PAVING SHALL BE PROVIDED AROUND THE PUMP ROOM FOR EASY ACCESS FOR MAINTENANCE. RAMPING PIPES PENSTOCKS TO BE PROVIDED AROUND THE STATION.
13. COVER LEVEL OF THE PUMP STATION AND ALL VALVE CHAMBERS SHALL BE 200mm ABOVE FINISHED LEVEL AND CONTROL PANEL ROOM FLOOR SHALL BE 300mm.
14. ALL NUTS & BOLTS ARE TO BE OF STAINLESS STEEL 316L.
15. AIR INLET AND FOULED DRAIN OFF PIPES SHALL BE DIRECTIONALLY OPPOSITE (TO THE EXTENT POSSIBLE).

MATERIAL LIST		
NO.	DESCRIPTION	QTY.
1	SUBMERSIBLE PUMP, MAKE FLYJET 33 AS L/S, HEAD 26.4M	3
2	DI ECCENTRIC REDUCER FLANGED	600x150 3
3	DI PIPE FL-FL	450 3
4	DI PIPE FL-FL	450 3
5	DI BEND FLANGED	450 3
6	FL-FL DI PIPE WITH PUDDLE FLANGE	450 3
7	DI DISMANTLING JOINT FLANGED	450 6
8	DI CHECK VALVE FLANGED	450 3
9	DI PIPE FL-FL	450 3
10	DI GATE VALVE FLANGED	450 3
11	DI CONCENTRIC REDUCER FLANGED	450x300 3
12	PRESSURE GAUGE	3
13	DI SWEEP TEE FLANGED	450x130 3
14	DI BLIND FLANGE	450 3
15	DI TEE FLANGED	450x130 3
16	NOT USED	-
17	DI PIPE FL-FL	450 3
18	PRESSURE TRANSMITTER	-
19	DI DISMANTLING JOINT FLANGED	450 3
20	NOT USED	-
21	FL-FL DI PIPE WITH PUDDLE FLANGE	450 3
22	DI PIPE FL-SP	450 3
23	MAGNETATOR	-
24	PENSTOCK	450x150 3
25	STAINLESS STEEL FLAP VALVE	450 3
26	PVC PIPE SP-SP	450 3
27	BALL VALVE	450 3
28	PVC BEND	450 3
29	DI GATE VALVE FLANGED	450 3
30	DI PIPE COUPLING	450 3
31	NOT USED	-

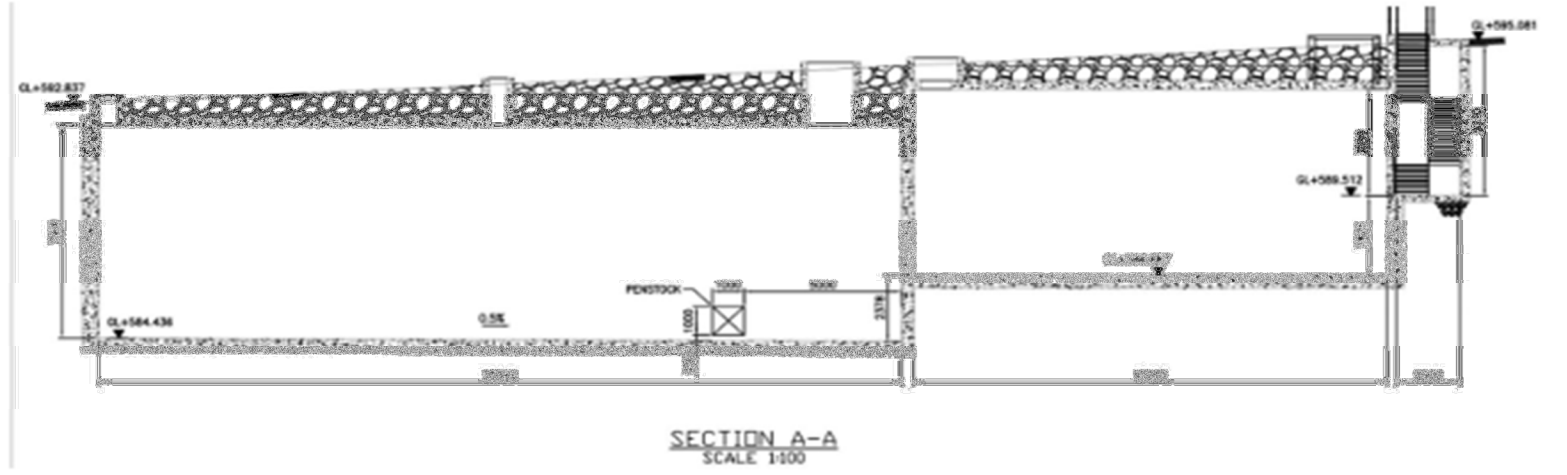
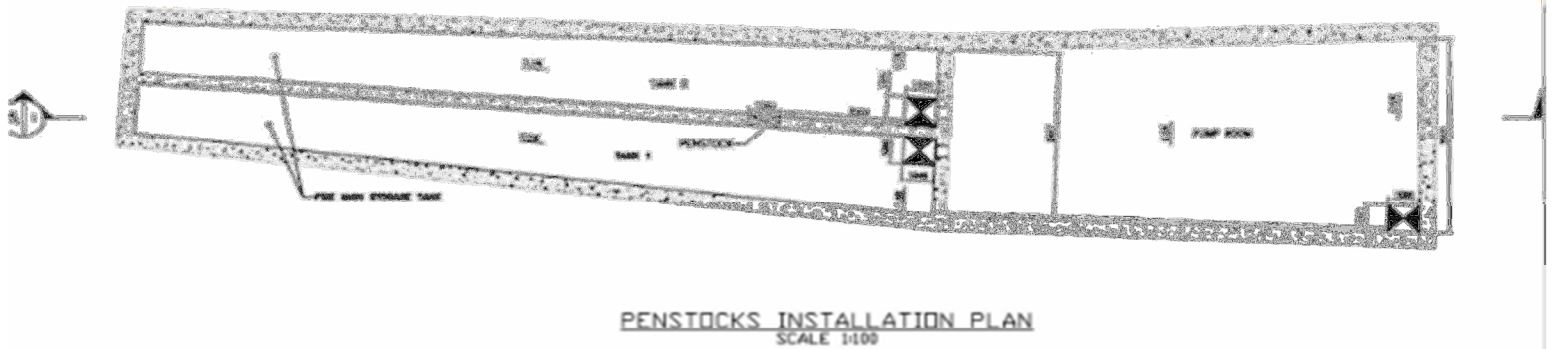
REVISIONS							
NO.	DATE	BY	DESCRIPTION	NO.	DATE	BY	DESCRIPTION
A.	25/SEP/10	INC	DETAIL DESIGN FOR APPROVAL				
B.	02/OCT/17	INC	UPDATED AS PER IFC COMMENTS				

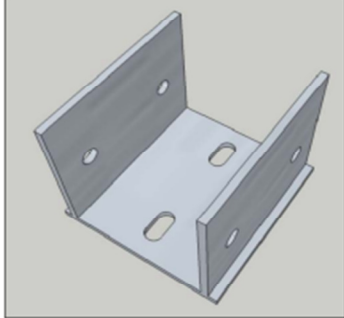
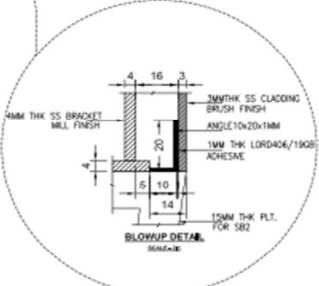
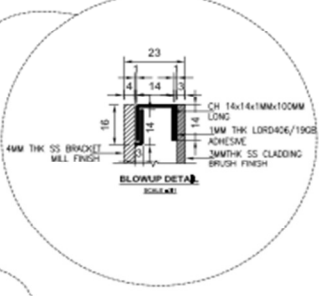
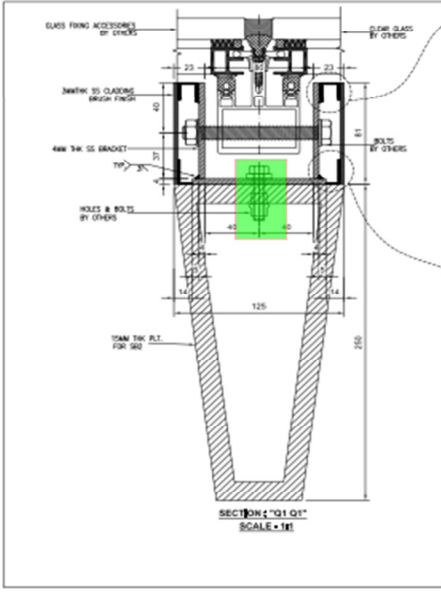
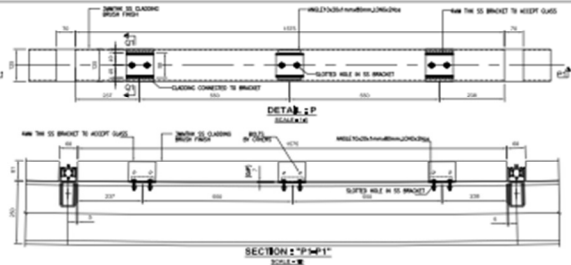
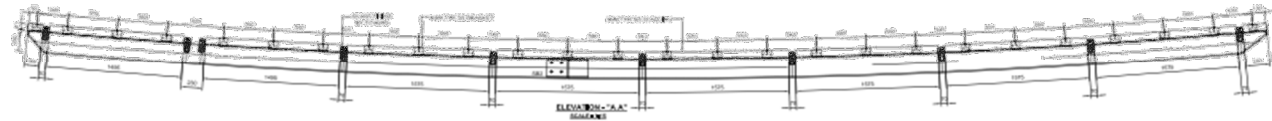
DESIGNED BY: SAA  
 DRAWN BY: SAA  
 CHECKED BY: SAA  
 DATE: SEP/2007

**PARSONS**  
 TDC  
 SAADIYAT

**SAADIYAT ISLAND INFRASTRUCTURE PROJECTS**  
 MARINA DISTRICT - TEMPORARY SEWER PUMPING STATION AND FORCE MAIN  
 WET WELL & VALVE CHAMBER DETAILS - SECTION I-I

PROJECT NO: P031-SPS  
 DRAWING NO: M-FST-60-0002  
 SHEET NO: 8





ENTRANCE 1  
 ENTRANCE 2  
 ENTRANCE 3  
 ENTRANCE 4  
 Keymap

1. BRACKETS ARE NOT TO BE SAID FOR THIS DRAWING.  
 2. ALL DIMENSIONS ARE IN MILLIMETERS (UNLESS NOTED OTHERWISE).  
 3. ALL MATERIALS ARE TO BE FINISHED (UNLESS NOTED OTHERWISE).  
 4. FINISH - (UNLESS NOTED OTHERWISE) - BRUSHED FINISH.

DIFFERENCE DOCUMENT  
 FOR APPROVAL  
 Qatar Railways Company  
 P.O. Box 20000  
 Doha, Qatar  
 Qatar Integrated Railway Project  
 Doha Metro/QR Station  
 STRUCTURAL  
 SHEET NO. 301  
 SHEET TITLE: STATION HOUSE GLASS BRIDGE BRACKET

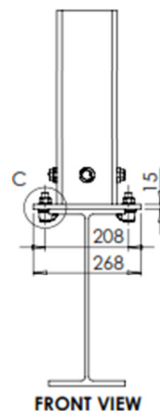
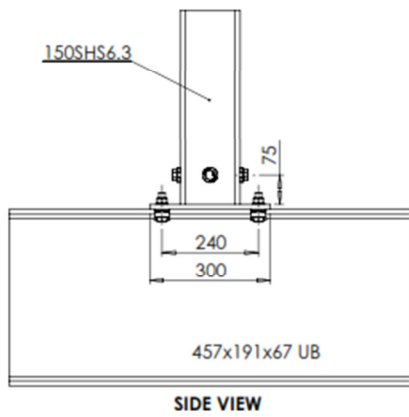
NPS	HOLES C207 CLASS E	NUMBER OF HOLES	EA AUMA	WEIGHT VALVE kg	WEIGHT EA kg	max. t °C
80"	2 1/8"	64	SA14.6	8500	60	80

TAG-numbers:  
 Quantity: 3 nos  
 BV214009  
 BV214010  
 BV214011

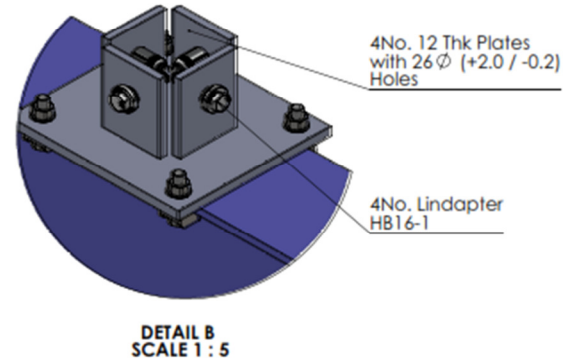
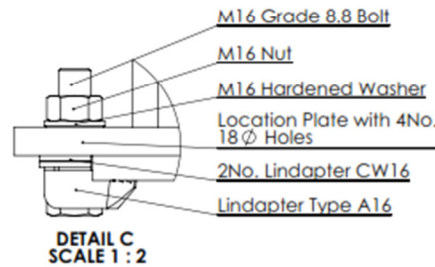
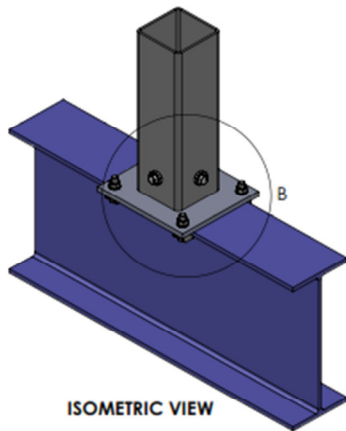
11/12/13  
 5,6  
 E = spare part  
 V= part subject to wear

NO	Particulars	QTY	UNIT	REMARKS
1	Valve	1	EA	80 1000
2	Handwheel	1	EA	100 1000
3	Actuator	1	EA	100 1000
4	Actuator	1	EA	100 1000
5	Handwheel	1	EA	100 1000
6	Actuator	1	EA	100 1000
7	Actuator	1	EA	100 1000
8	Handwheel	1	EA	100 1000
9	Actuator	1	EA	100 1000
10	Handwheel	1	EA	100 1000
11	Actuator	1	EA	100 1000
12	Handwheel	1	EA	100 1000
13	Actuator	1	EA	100 1000
14	Handwheel	1	EA	100 1000
15	Actuator	1	EA	100 1000
16	Handwheel	1	EA	100 1000
17	Actuator	1	EA	100 1000
18	Handwheel	1	EA	100 1000
19	Actuator	1	EA	100 1000
20	Handwheel	1	EA	100 1000
21	Actuator	1	EA	100 1000
22	Handwheel	1	EA	100 1000
23	Actuator	1	EA	100 1000
24	Handwheel	1	EA	100 1000
25	Actuator	1	EA	100 1000
26	Handwheel	1	EA	100 1000
27	Actuator	1	EA	100 1000
28	Handwheel	1	EA	100 1000
29	Actuator	1	EA	100 1000
30	Handwheel	1	EA	100 1000
31	Actuator	1	EA	100 1000
32	Handwheel	1	EA	100 1000
33	Actuator	1	EA	100 1000
34	Handwheel	1	EA	100 1000
35	Actuator	1	EA	100 1000
36	Handwheel	1	EA	100 1000
37	Actuator	1	EA	100 1000
38	Handwheel	1	EA	100 1000
39	Actuator	1	EA	100 1000
40	Handwheel	1	EA	100 1000
41	Actuator	1	EA	100 1000
42	Handwheel	1	EA	100 1000
43	Actuator	1	EA	100 1000
44	Handwheel	1	EA	100 1000
45	Actuator	1	EA	100 1000
46	Handwheel	1	EA	100 1000
47	Actuator	1	EA	100 1000
48	Handwheel	1	EA	100 1000
49	Actuator	1	EA	100 1000
50	Handwheel	1	EA	100 1000
51	Actuator	1	EA	100 1000
52	Handwheel	1	EA	100 1000
53	Actuator	1	EA	100 1000
54	Handwheel	1	EA	100 1000
55	Actuator	1	EA	100 1000
56	Handwheel	1	EA	100 1000
57	Actuator	1	EA	100 1000
58	Handwheel	1	EA	100 1000
59	Actuator	1	EA	100 1000
60	Handwheel	1	EA	100 1000
61	Actuator	1	EA	100 1000
62	Handwheel	1	EA	100 1000
63	Actuator	1	EA	100 1000
64	Handwheel	1	EA	100 1000

8500  
 Butterfly valve  
 NPS 78" AUMA C207 class E  
 EKN198 with SA 14.2, AC 01.2 Fieldbus  
 VAG  
 3-23-50544



4No. Pre-Drilled 26  $\phi$  (+2.0 / -0.2) Holes



<b>lindapter</b> Technical Sales & Support	DRAWN: A.R.
	DATE: 21/03/2011
	CONTRACT: URS Scott Wilson
	DIMENSIONS ARE IN MM
TOLERANCES: ±	
ANGULAR: BEND ±	
Scale: Not to Scale	

### SHS Post - to - Existing Beam Connection

SW1729-AR	REV: 0
SHEET 1 OF 1	

### LINDAPTER CONNECTION LOADS SUBJECT TO CAPACITY OF STEELWORK

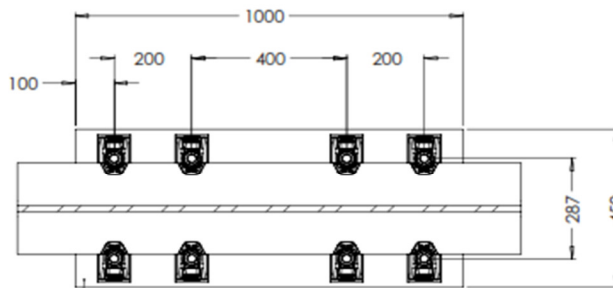
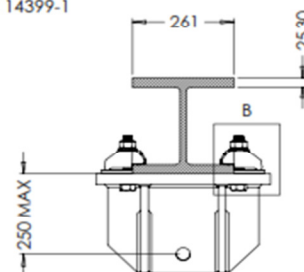
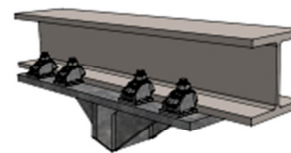
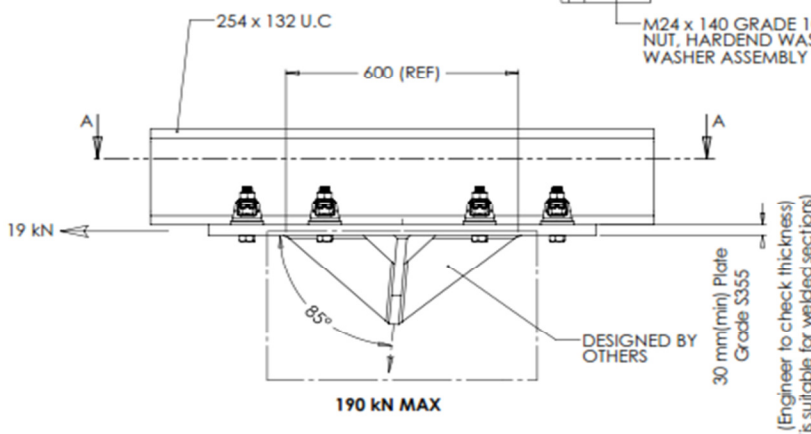
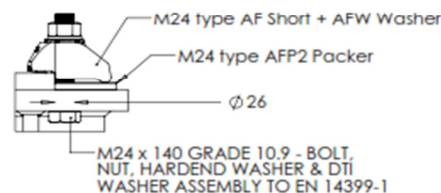


Plate Only Weight  
Approx 105 kg  
(Does not include welded sections)

**DETAIL B**



- DO NOT SCALE THIS DRAWING
- THE DRAWING AND THE CONNECTION THEREIN ARE THE PROPERTY OF LINDAPTER INTERNATIONAL. IT IS LOANED ON THE CONDITION THAT IT MUST NOT BE USED, COPIED, REPRODUCED OR EXPLORED WITHOUT WRITTEN PERMISSION AND CONSENT. THE DRAWING MUST ALSO NOT BE USED FOR ANY OTHER PURPOSE THAN WHICH IT IS ISSUED.
- IT IS THE RESPONSIBILITY OF THE ENGINEER TO PERFORM ALL REASONABLE CHECKS ON THE SUPPORTING AND SUPPORTED MEMBERS, THAT IS LOCAL TO THE CONNECTION AND THE LINDAPTER COMPONENTS, BOTH FOR THE LOAD APPLIED AND THE CLAMPING FORCE GENERATED FROM THE TIGHTENING OF THE FASTENERS, WHERE NECESSARY WORKMANSHIP FOR ENDS SHOWN ON THIS DRAWING SHOULD COMPLY WITH THE RELEVANT SECTION OF THE NATIONAL SPECIFICATION FOR STEELWORK (BS5950) FOR BUILDING CONSTRUCTION (SHS SPECIFICATION (HSS) FOR BUILDING CONSTRUCTION SHS SPECIFICATION MARKING VERSION).
- IF FELT NECESSARY, WHERE EXCESSIVE VIBRATION MAY BE A CONCERN, IT IS ACCEPTABLE FOR CERTAIN TYPES OF ANTI-VIBRATION LOCKING DEVICES SUCH AS, BUT NOT LIMITED TO, PROPRIETARY WASHERS AND NUTS TO BE USED WITH LINDAPTER COMPONENTS AND/OR FASTENERS. SUCH DEVICES OF ANY TYPE ARE NOT RECOMMENDED. IN THESE SITUATIONS IT IS IMPORTANT THAT THE MANUFACTURER'S INSTALLATION INSTRUCTIONS ARE FOLLOWED. NO GUARANTEE OR WARRANTY ARE IMPLIED.

- DIMENSIONS ARE IN MM
- TOLERANCES: ± 1.0mm
- ANGULAR: BEND ± 1.0deg
- MATERIAL COATINGS TO BE SPECIFIED BY THE ENGINEER

Assembly Data:		
Static Tensile SWL =	190kN	Factor of Safety: 3.2 : 1
Static Slip SWL =	19 kN	Factor of Safety: 2 : 1
Lindapter Fastener Tightening Torque = (Unlubricated bolts)	TO SUIT DTI	

For combined loadings the current relevant national standard should be taken into consideration

REV	DESCRIPTION	BY	DATE

### M24 SUPPORT BRACKET TO SUIT M36 MACALLOY SYSTEM



Shapoorji	GB-012076
S Christie	13/8/18
N.F.G	
NOT TO SCALE	
SW13479-SC	REV: 0

“We aim to be a one-stop sourcing outlet for all kinds of hardware and building materials,” says the director. Ever since its establishment, NHBM has earned the reputation of being a specialist supplier of wire nails, binding wire, steel nails, and wide variety of hardware products. “We are now looking to further consolidate our position in new and emerging markets in the Gulf by launching an aggressive promotional campaign to attract more customers” says Director of NHBM. Going by the company’s previous record, NHBM is well poised to capture a sizeable share of the Gulf market by providing a wide range of products at low prices and by satisfying its customers’ needs and requirements through its well established supply chain.



NHBM group of companies is characterised by NHBM family and is preferably managed by a member of that family.

### ■ Vision Statement

*“NHBM’s vision is to stay successful and to be ahead of the competition by providing quality products timely with cost effectiveness.”*

### ■ Our Core Values

“We will always try to make our best efforts in supplying quality products with relatively less time and much cost effective solutions”

### ■ Our Motto

*Dependability..... Delivered.*

## With the **NHBM Process System** we inspire our customers!

With innovative, committed and motivated employees, we apply efficient processes to generate the necessary profit. Thereby, we will become best-in-class in our lines of business.

This approach makes us the best in the industry and secure the success and the future of the NHBM group of companies.

The biggest source of capital and the most important success factor in our company are the **employees** – not systems and buildings!